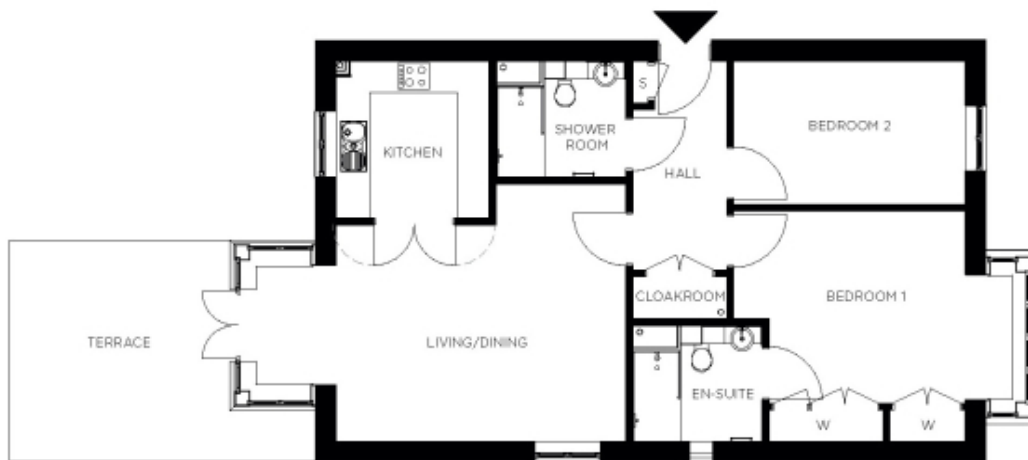


105 Hylde Manor



Price: £627,000*, Ground floor

This charming home features two perfectly proportioned double bedrooms (one en suite) as well as a separate bathroom, and carefully designed kitchen. The adjacent living area offers an intimate space that's flooded with light. The Newton's clever design - with a second bedroom and bathroom - means you can entertain family and friends whenever you like.

* other charges apply

Internal measurements: 990sq ft

Living	23' 2" x 16' 2"	7,058 x 4,919mm
Kitchen	9' 7" x 9' 10"	2,910 x 2,997mm
Hallway	5' 11" x 13' 2"	1,800 x 4,005mm
Bedroom 1	17' 7" x 12' 1"	5,351 x 3,668mm
Wardrobe	7' 3" x 2' 0"	2,200 x 603mm
Wardrobe	4' 10" x 2' 0"	1,450 x 603mm
Ensuite 1	8' 1" x 7' 3"	2,450 x 2,200mm
Bedroom 2	14' 6" x 9' 0"	4,411 x 2,740mm
Shower	8' 1" x 7' 3"	2,448 x 2,198mm
Patio	13' 7" x 10' 4"	4,122 x 3,134mm



PLEASE NOTE: Images are for illustrative purposes only. Rooms shown may not be representative of this property.