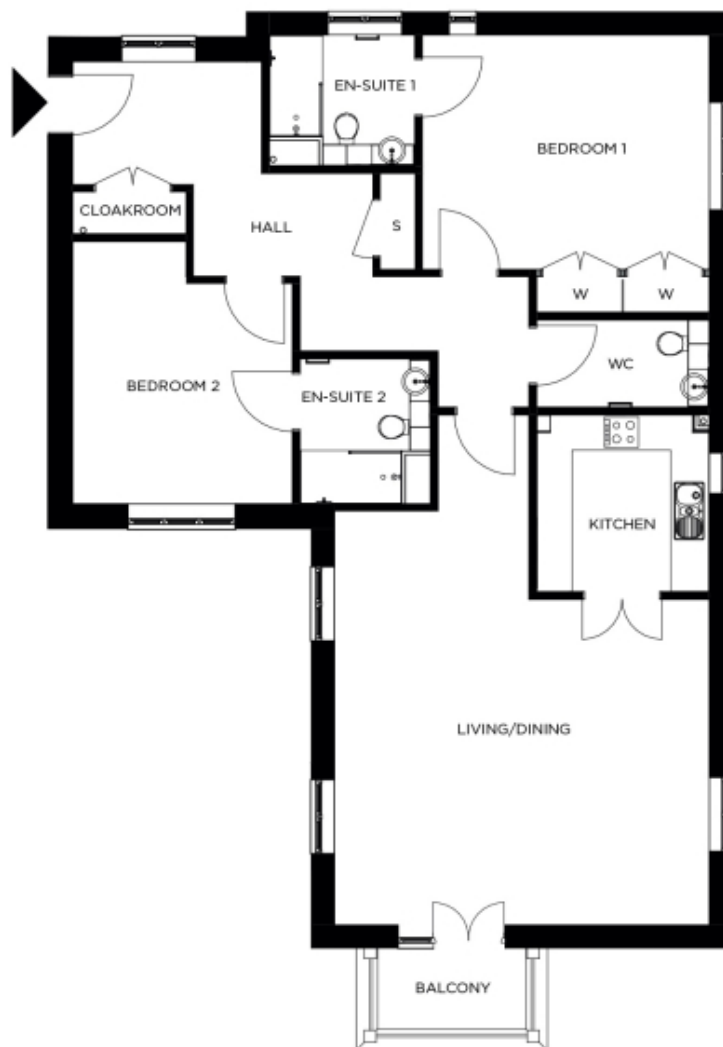


# 86 Biddenden Court



Price: £817,000\*, First floor

This attractive apartment combines spacious proportions with practical design. Two generous double bedrooms (with master en suite) are linked by a hallway with ample storage. A large open-plan dining area adjoins the fully equipped kitchen. The second bedroom and separate bathroom make this apartment perfect for accommodating family and friends.

\* other charges apply

Internal measurements: 1,380sq ft

Living	20' 10" x 22' 10"	6,342 x 6,959mm
Kitchen	9' 7" x 9' 11"	2,910 x 3,001mm
Hallway	10' 7" x 9' 11"	3,214 x 3,018mm
Bedroom 1	15' 4" x 13' 1"	4,666 x 3,970mm
Wardrobe	9' 7" x 2' 0"	2,910 x 600mm
Ensuite 1	8' 1" x 7' 3"	2,450 x 2,200mm
Bedroom 2	12' 3" x 14' 7"	3,714 x 4,427mm
Shower	7' 3" x 8' 1"	2,200 x 2,450mm
Store	2' 0" x 5' 5"	600 x 1,644mm
Cloak	9' 7" x 4' 10"	2,913 x 1,468mm
Balcony	8' 7" x 4' 3"	2,608 x 1,283mm



PLEASE NOTE: Images are for illustrative purposes only. Rooms shown may not be representative of this property.