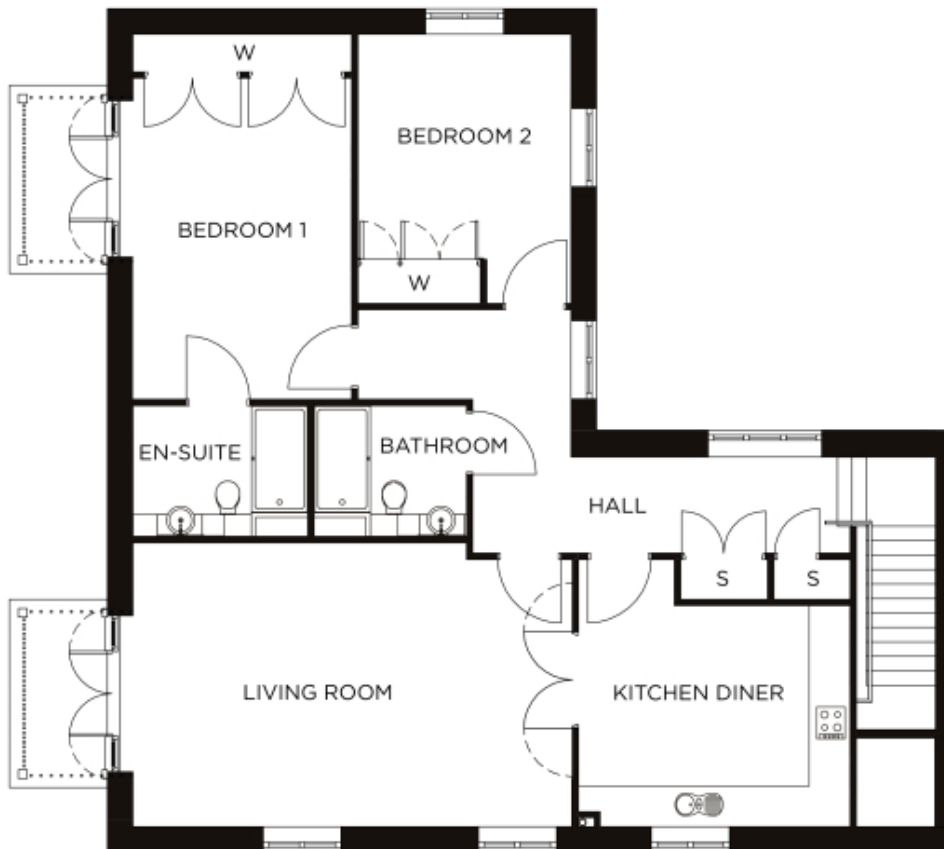


# 2 Arch Vale

A beautiful modern home



Price: £719,000\*, First floor floor

Our spacious two-bedroom apartments offer the perfect balance of style and function, centrally located to ensure easy access to all village facilities.

\* other charges apply

Internal measurements: 1,259sq ft

Bedroom 2	14' 1" x 11' 2"	4,284 x 3,399mm
Bathroom	8' 0" x 6' 10"	2,430 x 2,080mm
En-suite 1	9' 2" x 6' 10"	2,788 x 2,080mm
Store 1	4' 7" x 2' 1"	1,385 x 635mm
Store 2	4' 0" x 2' 1"	1,215 x 635mm
Kitchen	14' 0" x 14' 3"	4,253 x 4,328mm
Living/Dining	23' 0" x 14' 10"	7,003 x 4,519mm
Bedroom 1	16' 10" x 11' 6"	5,110 x 3,485mm





PLEASE NOTE: Images are for illustrative purposes only. Rooms shown may not be representative of this property.