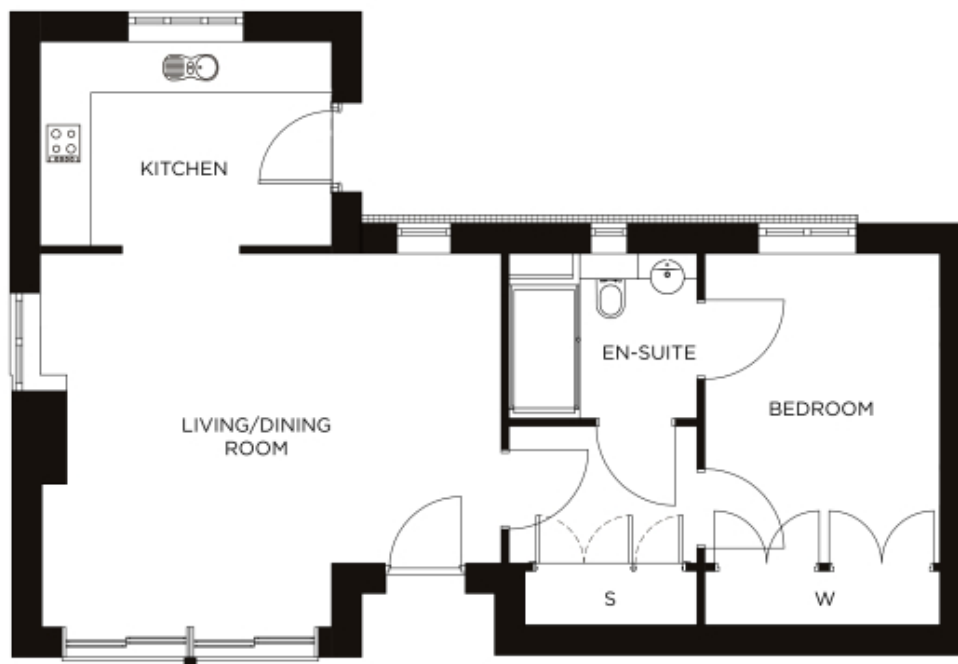


# 1 Broomfield House



Price: £450,000\*, Ground floor

This light and airy one-bedroom bungalow combines spacious proportions with practical design. The bedroom benefits from built-in storage and en-suite bathroom, while the open-plan living and dining room is ideal for entertaining guests.

\* other charges apply

Internal measurements: 667sq ft

Kitchen	8' 7" x 12' 3"	2,600 x 3,721mm
Living/Dining	19' 3" x 15' 8"	5,860 x 4,759mm
Bedroom 1	13' 0" x 9' 11"	3,946 x 2,999mm
En-suite 1	7' 11" x 6' 11"	2,400 x 2,100mm
Store 1	7' 3" x 2' 4"	2,198 x 688mm



PLEASE NOTE: Images are for illustrative purposes only. Rooms shown may not be representative of this property.