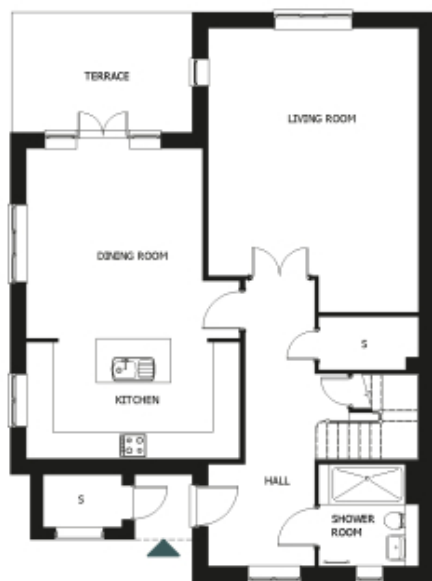


62 Woodland Drive

A beautiful modern home



Price: £838,500*

This beautiful cottage features a versatile living space adjacent to the fully equipped open-plan kitchen diner. An en suite master bedroom is supplemented by a second double bedroom and separate bathroom, giving the flexibility to entertain guests all year round. An entrance with ample storage flows into an interior complete with the very latest fixtures, fittings and appliances.

* Other charges apply. All measurements and descriptions described, the homes are unfurnished.

* Based on a 125-year lease, and subject to service charge, event fees and ground rent. Please ask for further information.

Version 3 - 19/10/2018

Internal measurements: 1,732sq ft

Living	0' 0" x 0' 0"	0 x 0mm
Kitchen	0' 0" x 0' 0"	0 x 0mm
Dining	0' 0" x 0' 0"	0 x 0mm
Bedroom 1	0' 0" x 0' 0"	0 x 0mm
Bedroom 2	0' 0" x 0' 0"	0 x 0mm
Ensuite 1	0' 0" x 0' 0"	0 x 0mm
Bath 3	0' 0" x 0' 0"	0 x 0mm
Shower	0' 0" x 0' 0"	0 x 0mm
Patio	0' 0" x 0' 0"	0 x 0mm



PLEASE NOTE: Images are for illustrative purposes only, Rooms shown may not be representative of this property.