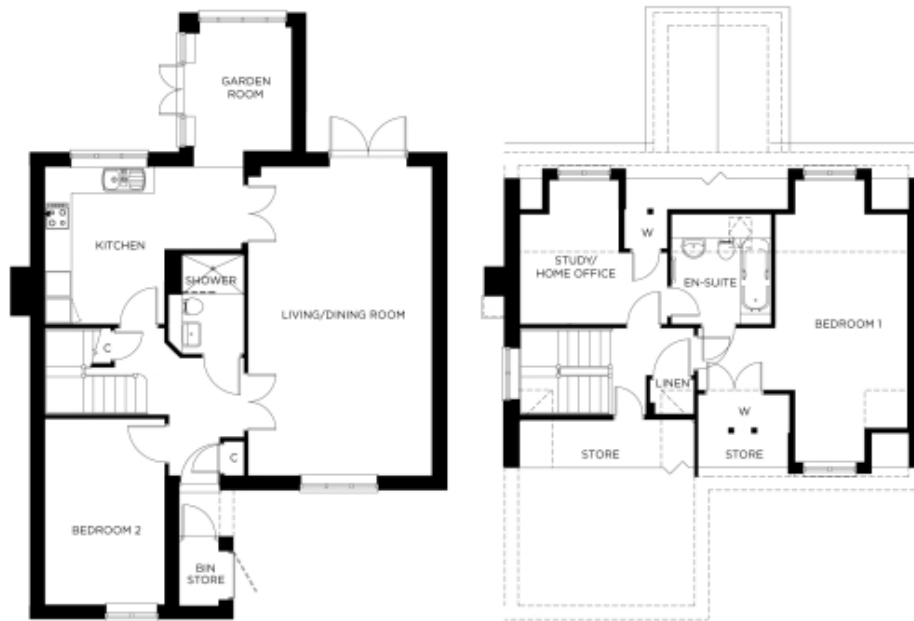


22 Great Alne Park

A beautiful modern home



Price: £559,000*

This beautiful house features a versatile open-plan living space next to the fully equipped kitchen. An en suite master bedroom is supplemented by a second en suite double bedroom, third bedroom and separate shower-room, giving the flexibility to entertain guests all year round. An entrance with ample storage flows into an interior complete with the very latest fixtures, fittings and appliances.

Internal measurements: 1,300sq ft

Kitchen	14' 7" x 11' 7"	4,440 x 3,510mm
Living/Dining Room	13' 7" x 22' 9"	4,120 x 6,930mm
Bedroom 1	9' 8" x 15' 9"	2,940 x 4,780mm
Bedroom 2	8' 9" x 13' 8"	2,660 x 4,150mm
Study/Home Office	10' 10" x 8' 1"	3,290 x 2,450mm

* Other charges apply. All fittings described, the homes are unfurnished.

* Based on a 125-year lease, and subject to service charge, event fees and ground rent. Please ask for further information.

Version 3 - 19/10/2018



PLEASE NOTE: Images are for illustrative purposes only, Rooms shown may not be representative of this property.