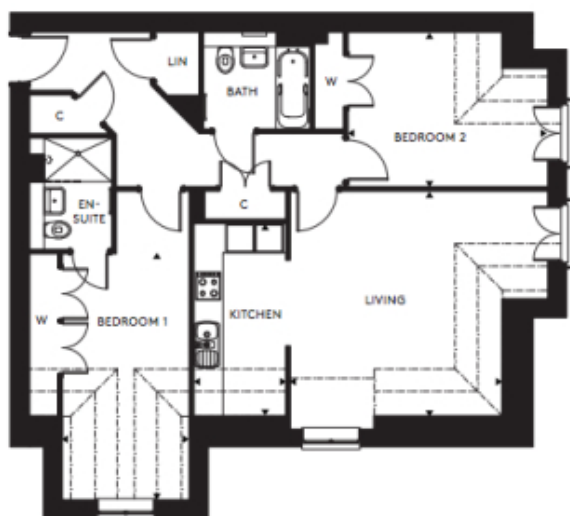


# 87 Great Alne Park

A beautiful modern home



**Price: £411,500\***, Second floor

A nod to the traditionally beautiful buildings of Great Alne, Rockwell Lodge is comprised of stylish one and two bedroom apartments. Positioned next to the landscaped feature garden it also backs onto the green open spaces of the village offering scenic views.

\* other charges apply

**Internal measurements: 935sq ft**

Kitchen	6' 1" x 12' 11"	1,850 x 3,930mm
Living/Dining	14' 3" x 15' 2"	4,330 x 4,600mm
Bedroom 1	8' 6" x 16' 7"	2,580 x 5,040mm
Bedroom 2	13' 6" x 10' 5"	4,090 x 3,150mm

Apart from the fixtures and fittings described, the homes are unfurnished.

\* Based on a 125-year lease, and subject to service charge, event fees and ground rent. Please ask for further information.

Version 3 - 19/10/2018



PLEASE NOTE: Images are for illustrative purposes only, Rooms shown may not be representative of this property.