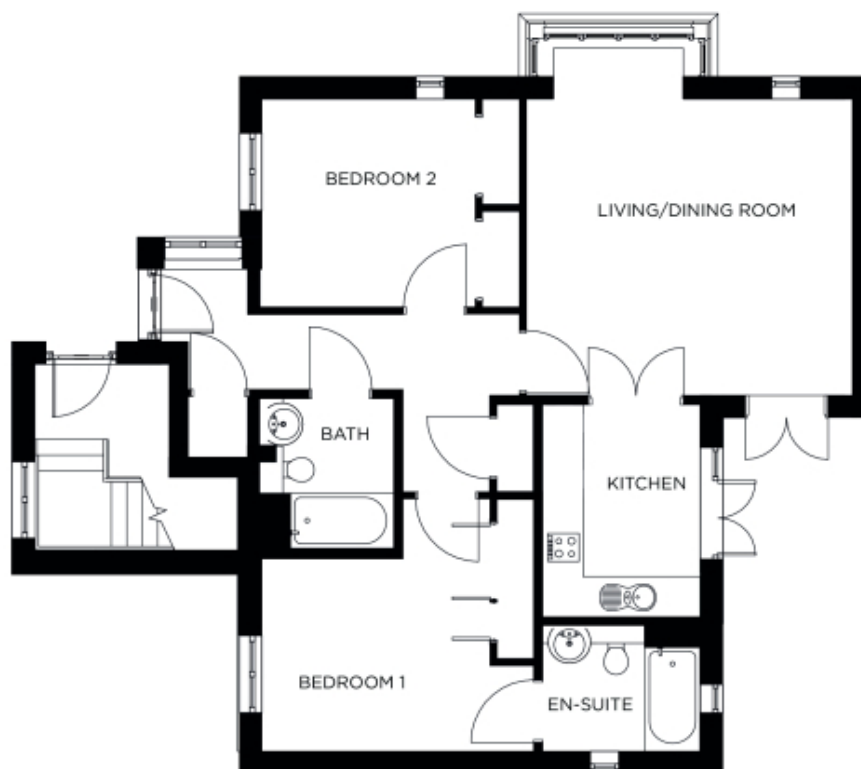


2 Beechwood House

A beautiful modern home



Price: £549,500*, First floor floor

This beautifully proportioned apartment features two generous double bedrooms (one en suite) as well as a separate bathroom and integrated storage space throughout. The sizeable open plan living/dining space leads to a modern kitchen, with double doors creating added flexibility. It's the perfect home in which to entertain family and friends all year round.

* other charges apply

Apart from the fixtures and fittings described, the homes are unfurnished.

* Based on a 125-year lease, and subject to service charge, event fees and ground rent. Please ask for further information.

Version 3 - 19/10/2018

Internal measurements: 1,130sq ft

| | | |
|--------------------|-----------------|-----------------|
| Kitchen | 11' 3" x 8' 4" | 3,420 x 2,540mm |
| Living/Dining Room | 15' 9" x 17' 4" | 4,780 x 5,260mm |
| Bedroom 1 | 10' 3" x 12' 1" | 3,100 x 3,680mm |
| Ensuite | 7' 2" x 8' 2" | 2,160 x 2,470mm |
| Bedroom 2 | 11' 4" x 11' 0" | 3,440 x 3,350mm |
| Bathroom | 8' 2" x 7' 0" | 2,470 x 2,120mm |

