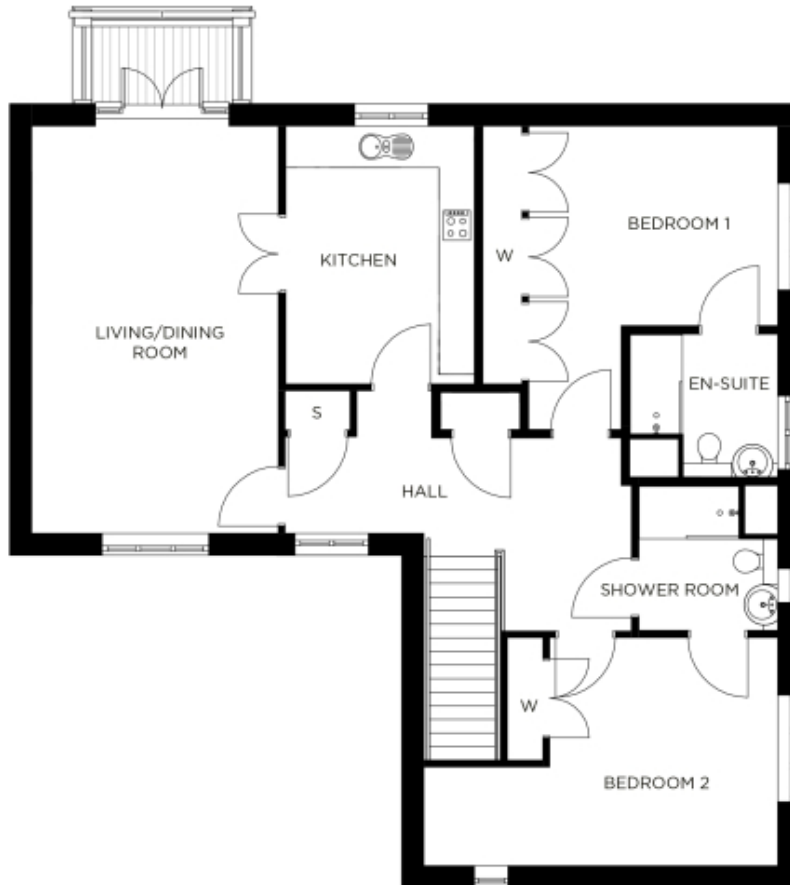


3 Partridge House

A beautiful modern home



Price: £620,000*, First floor

A grand apartment with enviable living space and large windows that let in lots of natural light. Its airy living room and large dining kitchen with pantry are complemented by a large en suite master bedroom, a spacious second double bedroom and generous hall with ample storage.

* other charges apply

Internal measurements: 1,290sq ft

| | | |
|--------------------|-------------------|-----------------|
| Kitchen | 10' 5" x 14' 4" | 3,160 x 4,360mm |
| Living/Dining Room | 13' 9" x 22' 8" | 4,170 x 6,890mm |
| Bedroom 1 | 13' 11" x 10' 11" | 4,220 x 3,320mm |
| Ensuite | 8' 1" x 7' 7" | 2,440 x 2,290mm |
| Bedroom 2 | 12' 6" x 12' 0" | 3,800 x 3,650mm |
| Shower Room | 7' 9" x 8' 2" | 2,350 x 2,470mm |



PLEASE NOTE: Images are for illustrative purposes only, rooms shown may not be representative of this property.