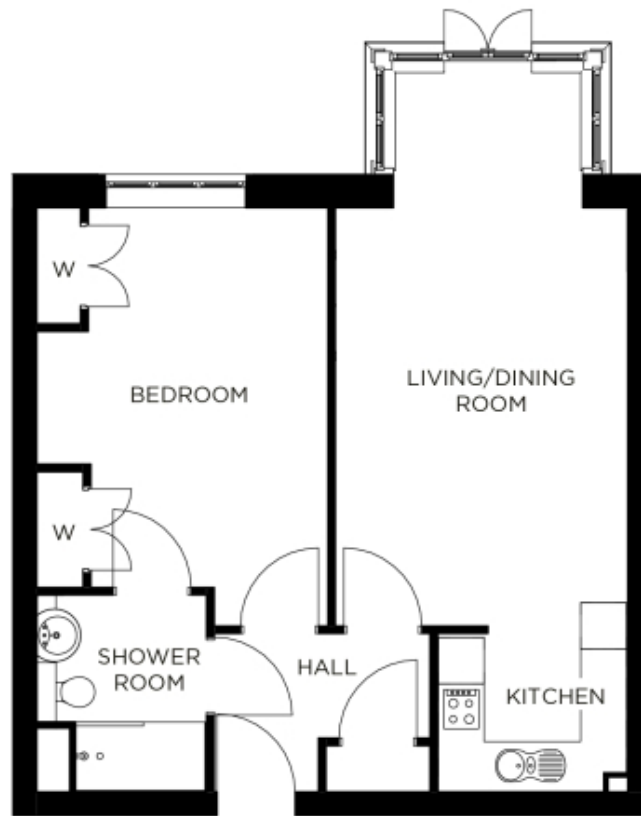


4 The Grange

A beautiful modern home



Price: £340,000*, Ground floor

Our spacious one and two-bedroom retirement living apartments offer the perfect balance of style and function, centrally located to ensure easy access to our village facilities.

* other charges apply

Internal measurements: 668sq ft

Kitchen	8' 2" x 8' 0"	2,470 x 2,420mm
Living/Dining Room	17' 10" x 12' 6"	5,420 x 3,790mm
Bedroom 1	17' 10" x 12' 5"	5,420 x 3,770mm
Shower room	8' 4" x 7' 3"	2,540 x 2,190mm



PLEASE NOTE: Images are for illustrative purposes only, rooms shown may not be representative of this property.