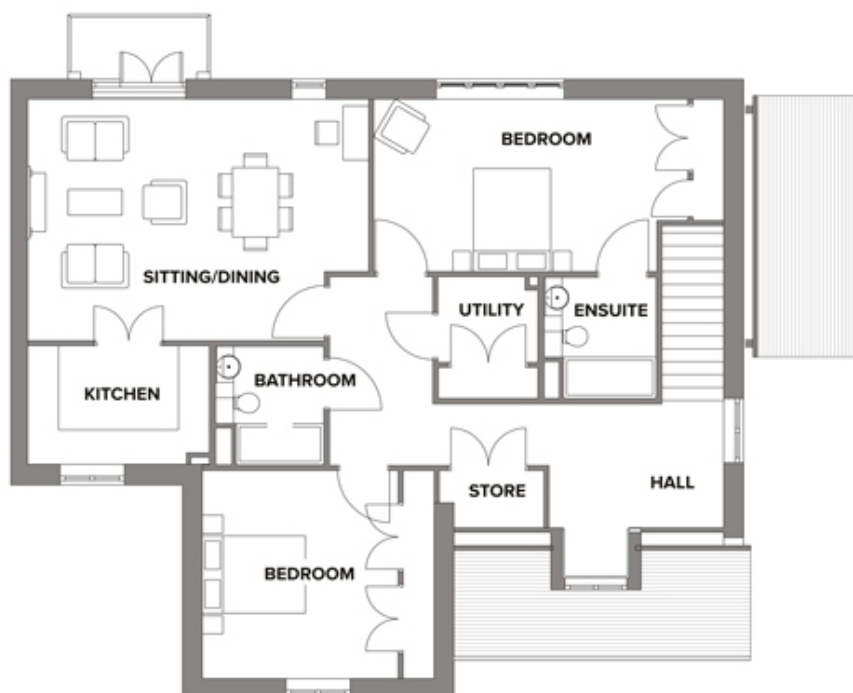


# 6 Howard Manor

A beautiful modern home



**Price: £499,500\*, First floor floor**

This exceptional apartment features a self-contained kitchen that's accessible from both the hallway and the large open-plan living area. Two large double bedrooms (one en-suite) and a separate bathroom are complemented by ample storage space throughout.

\* other charges apply

**Internal measurements: 1,333sq ft**

Sitting / Dining	21' 9" x 15' 5"	6,622 x 4,691mm
Kitchen	11' 7" x 7' 7"	3,529 x 2,300mm
Bedroom 1	15' 10" x 13' 10"	4,819 x 4,200mm
Bedroom 2	14' 6" x 11' 1"	4,401 x 3,357mm
Bathroom	7' 9" x 6' 11"	2,350 x 2,100mm
Ensuite	7' 9" x 7' 3"	2,350 x 2,200mm

Apart from the fixtures and fittings described, the homes are unfurnished.

\* Based on a 125-year lease, and subject to service charge, event fees and ground rent. Please ask for further information.

Version 3 - 19/10/2018





PLEASE NOTE: Images are for illustrative purposes only. Rooms shown may not be representative of this property.