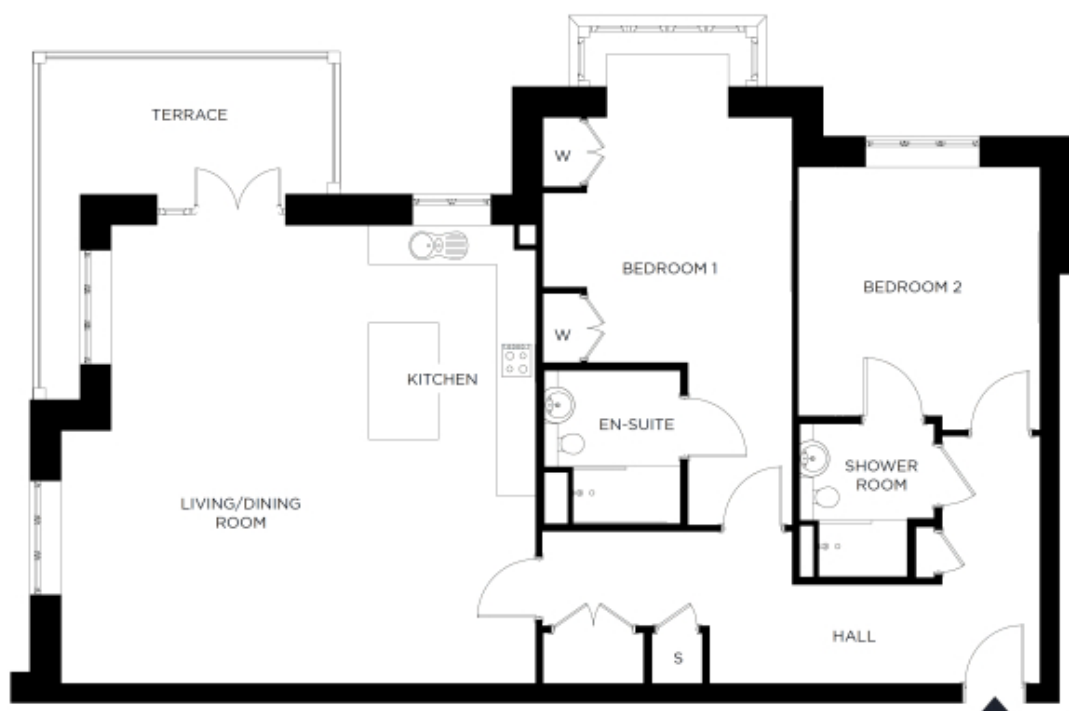


# 5 The Grange

A beautiful modern home



**Price: £734,000\***, Upper ground floor **Internal measurements: 1,323sq ft**

Our spacious two-bedroom retirement living apartments offer the perfect balance of style and function, centrally located to ensure easy access to all village facilities.

\* other charges apply

Living	23' 11" x 24' 8"	7,278 x 7,496mm
Bedroom 1	24' 6" x 13' 0"	7,462 x 3,957mm
Bedroom 2	12' 6" x 13' 9"	3,787 x 4,174mm
Ensuite 1	7' 1" x 8' 0"	2,155 x 2,430mm
Ensuite 2	8' 0" x 7' 0"	2,430 x 2,130mm
Patio	15' 1" x 17' 8"	4,595 x 5,375mm

Apart from the fixtures and fittings described, the homes are unfurnished.

\* Based on a 125-year lease, and subject to service charge, event fees and ground rent. Please ask for further information.

Version 3 - 19/10/2018



PLEASE NOTE: Images are for illustrative purposes only. Rooms shown may not be representative of this property.